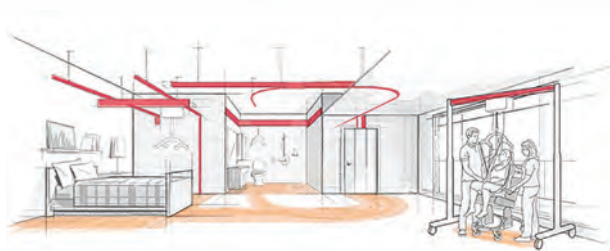


Exclusively Distributed by



PRISM MEDICAL UK

Ceiling Hoist Range

C380 Bariatric Ceiling Hoist

Exclusive Distribution with High Quality Service & Support

Prism Medical UK are the global leader in innovation and safety focused medical products. This trusted brand has a proven history in Australia and is the preferred choice of ceiling hoist solutions for many Aged Care and Hospital groups. Key safety features and stringent product testing ensure Prism Ceiling Hoists are the top performers in their category.

Aidacare's partnership with Prism Medical UK ensures that extremely high quality and internationally tested products are readily available in Australia and backed with excellent sales, installation and preventative maintenance support nation wide.

C380 Bariatric Ceiling Hoist

Bariatric clients often exceed a hoist's safe working load and this can create an unsafe working environment. In cases where a client's weight, size or medical condition requires precise control when transferring or re-positioning, the Prism C380 Bariatric Ceiling Track Hoist provides a safe and reliable solution.

The C380 is specifically designed to lift clients that exceed a standard hoist's maximum weight capacity. As the strongest Ceiling Track Hoist in its class, the C380 safely transfers bariatric clients with respect and dignity.



Key Features

1. Safe working load of 380kg
2. Easy to operate pneumatic handset
3. Emergency stop/emergency lower
4. Manual or powered traverse available
5. Smooth stop start to ensure user comfort
6. Bariatric four point carry bar
7. Carry bar fitted with Quick Release System for simple interchange of carry bars
8. Easy to read LCD display
9. Low profile hoist unit provides a great lift height

C380 Ceiling Hoist Range

Code	Description	S.W.L
LIC350250	C380 Bariatric - Manual Traverse	380 kg
LIC350260	C380 Bariatric - Powered Traverse	380 kg
LIC350270	C380 Bariatric - Powered Traverse and Return to Charge	380 kg

Quality & Compliance

- All systems are tested and installed in compliance with Australian Standard AS/NZS ISO 10535-2011: Hoists for the transfer of disabled person
- Aidacare is an ISO9001 compliant company
- Aidacare uses an accredited network of trained installers, engineers and load testers.



CP200 Portable Ceiling Hoist

CP200 Portable Ceiling Hoist

The Prism CP200 Portable Track Hoist offers exceptional versatility and cost savings when compared to multiple fixed installations. It can be quickly moved between multiple fixed ceiling track systems and used in conjunction with gantry systems such as the Prism FSG200 or Easy-Fit. The 'QRS' quick release systems on both the top and bottom of the unit allows it to be swapped between fixed and portable applications in seconds, simply by altering the orientation of the unit and which QRS hook the carry bar is fitted to.

The CP200 is compact and quiet in use, offering a soft start/stop feature for user comfort and provides up to 60 lifts on a single charge. With a maximum rated load of 200kg. The CP200 is suitable for hospitals, care homes and home care environments.



Clax Transport Cart
WAT758020

FSG200 Free Standing Gantry
LIC352105

Key Features

1. Hoist can be reversed to act as a portable or fixed unit providing flexibility of use
2. Slimline, low profile, padded carry bar that has six loop attachments as standard (four-point hook optional).
3. Different width carry bars also available
4. Low profile hoist unit is unobtrusive and provides greater lifting height
5. All lifting and traversing operations have soft start/stop to ensure smooth transfers for the patient
6. A host of safety features including a QRS reacher and carry bar
7. Smooth running tape with large lifting range
8. State of the art display with lift counter
9. Ergonomically designed handset with hold to run clearly marked buttons and directional arrows requires minimum pressure to operate. Pneumatically controlled, making it safe for use in wet conditions
10. Fire retardant cover completely encapsulates hoist
11. Neat in track transformer, IP 67 rated
12. Coloured direction indicators on hoist unit match hand control to ensure correct operation first time
13. Emergency stop and manual emergency window
14. Clax Transport Cart (Optional Accessory)
15. Free Standing Gantry (Optional Accessory)

CP200 Ceiling Hoist Range

Code	Description	Height Range	Weight	S.W.L
LIC350105	CP200 Portable Ceiling Hoist	Up to 1960 mm	3.8 kg	200 kg
LIC352105	FSG200 Free Standing Gantry (sold as an optional accessory)			
LIC352120	Pressure Fit System (sold as an optional accessory)			
WAT758020	Clax Transport Cart (sold as an optional accessory)			

Quality & Compliance

- All systems are tested and installed in compliance with Australian Standard AS/NZS ISO 10535-2011: Hoists for the transfer of disabled persons
- Aidacare is an ISO9001 compliant company
- Aidacare uses an accredited network of trained installers, engineers and load testers.



✓ CP136 Ceiling Hoist is registered in the ARTG, AUSTRALIA ARTG 286310

P200 Portable Ceiling Hoist

P200 Portable Ceiling Hoist

The P200 with its unique innovative design is one of the lightest portable hoists on the market, yet it is capable of lifting up to 200 kg. The P200 has numerous safety features to ensure safer lifting and handling for both the client and caregiver. Suitable for use with fixed ceiling tracks or mobile gantry systems. The design and features of the P200 makes it perfect for use in community or nursing environments.

Quick Release System (QRS)

The Freeway QRS® allows the P200 to be safely and easily attached or removed from the gantry or track system by hand or by means of a new and improved reacher.

Item Code: LIC354170 - QRS Reacher Bar (sold as an optional accessory)



To Attach

Attach the QRS carabiner into the reacher and pull on the lift tape to open the red latch.



Insert the carabiner into the trolley set and remove the reacher - which closes and locks the carabiner.



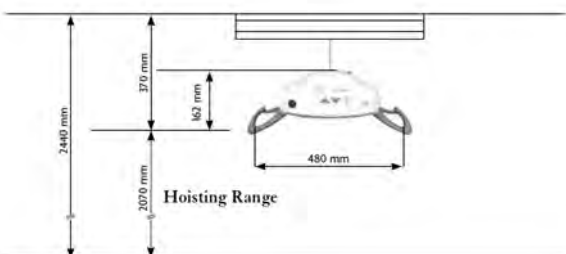
To Remove

Holding the lifttape, slide the reacher up the tape and insert into the QRS carabiner.



Push to reacher upwards to fully open the QRS latch and remove from the trolley set.

Hoisting Range



P200 Ceiling Hoist Range

Code	Description	S.WL
LIC350110	P200 Portable Ceiling Hoist - Manual Traverse & QRS	200 kg
LIC350120	P200 Portable Ceiling Hoist - Manual Traverse	200 kg
LIC352105	FSG200 Free Standing Gantry (sold as an optional accessory)	
LIC352120	Pressure Fit System (sold as an optional accessory)	
WAT758020	Clax Transport Cart (sold as an optional accessory)	
LIC354170	QRS Reacher Bar (sold as an optional accessory)	

P200 Specifications

Specification	
Lift Motor	24 VDC
Charger Input	100-240 VAC, 0.35 Amps
Charger Output	29.4 VDC, 0.5 Amps
Batteries	24 VDC (2x12 VDC) 2.3 AH
Hoist Case	Flame Retardant ABS
Hand Control	Pneumatic
Hoisting Range	Up to 2070mm
Hoist Weight	4.8 kg
Maximum Load	200 kg
Internal Fuses	15 Amp
Rated Performance	15 - 20 lifts at 200kg from fully charged

Optional Accessories



Clax Transport Cart
WAT758020



FSG200
Free Standing Gantry
LIC352105

Quality & Compliance

- All systems are tested and installed in compliance with Australian Standard AS/NZS ISO 10535-2011: Hoists for the transfer of disabled persons
- Aidacare is an ISO9001 compliant company
- Aidacare uses an accredited network of trained installers, engineers and load testers.



P200 Ceiling Hoist is registered in the ARTG, AUSTRALIA ARTG 286310

Key Features



Simple On Board Controls

- Complements the pneumatic hand set
- Quiet operation with 'soft start/ stop' for client comfort



On Board Display

- Audio and visual battery indicators warn when the battery needs recharging, ensuring the hoist is always ready to use and avoids the battery running out at a critical moment
- Integrated long life battery offers the convenience of on board charging. Eliminates the risk of batteries and charging units getting lost or damaged (keeping running costs down). Battery fully charged in 4hrs
- 'Auto sleep' facility – prolongs battery life



Emergency Lowering Facility

- Allows the safe lowering of the hoist in the unlikely event of the failure of other controls
- **Other safety features:** Over speed governor, built in safety limits & slack tape sensor
- The slack tape sensor will automatically stop the unit if accidentally lowered onto a resident



Integrated Full Width Carry Bar with Unique Contoured Shape

- Creates optimum space for the client and the caregiver



'Room to Room' Transfer Facility

- Allows the client to be transferred from 'room to room' without the need to be disconnected from the hoist or for costly building modifications



Carry Bar

- Folds for ease of transporting and storage



ON/OFF Switch (on Rear of Hoist)

- Allows the hoist to be switched off quickly in the case of an emergency



Carry Bar Latch Sections

- Client safety is assured with positive locking latches to secure the sling
- Anodised coating ensures longevity of operation and ease of cleaning



Ergonomically Designed Handset

- Simple 2 button operation
- Pneumatically controlled, requiring minimum pressure to operate
- Safe to use in wet conditions



Clip on Rear of Handset

- Allows the handset to be conveniently positioned on the hoist carry bar when not needed

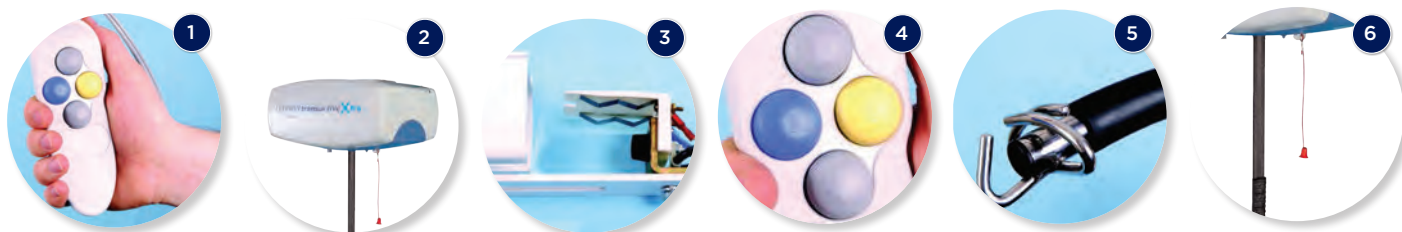
Transactive Xtra Ceiling Hoist

Transactive Xtra Ceiling Hoist

The all new Transactive Xtra, a product of world class design and state of the art features providing safe, reliable and effective hoisting for carers and users alike. Together with the extensive range of track configurations, the Transactive Xtra can provide the perfect solution to your hoisting requirements.

- Slimline and with great lifting capacity
- Low profile hoist unit is unobtrusive and provides greater lifting height
- All lifting and traversing operations have soft start/stop to ensure smooth transfers for the patient
- A host of safety features
- Smooth running tape with large lifting range
- State of the art display with lift counter

130kg, 160kg,
200kg, 270kg
MODELS AVAILABLE

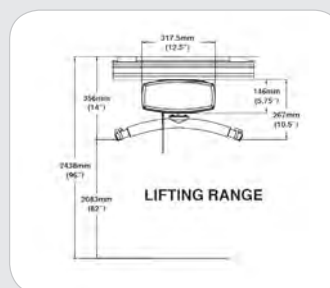


1. Ergonomically designed handset with hold to run clearly marked buttons and directional arrows requires minimum pressure to operate. Pneumatically controlled, making it safe for use in wet conditions.
2. Fire retardant cover completely encapsulates hoist.
3. Neat in track transformer, IP 67 rated.
4. Coloured Direction indicators on hoist unit match hand control to ensure correct operation first time.
5. Slimline, low profile, padded carry bar that has six loop attachments as standard (four-point hook optional). Different width carry bars also available.
6. Emergency stop and manual emergency window.



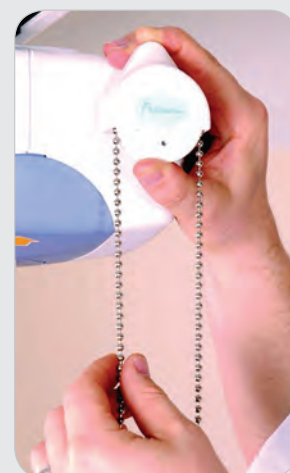
Display provides essential information for the user, carer and engineer

- Lift counter
- Displays operation being carried out (UP / DOWN etc)
- Level of battery charge
- Low battery indicator (visual and audial)
- On-charge indicator
- Return to charge (option)
- Diagnostic feature for transactive technician to aid maintenance and repair
- State of the art display with lift counter



Manual Windown & Raising

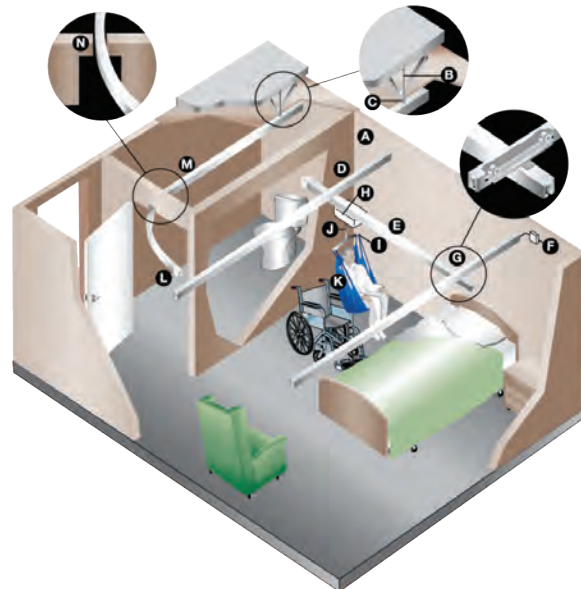
This feature is unique to Freeway hoists and allows the hoist to continue to be used until the engineer arrives. This provides peace of mind and security to carer and patient.



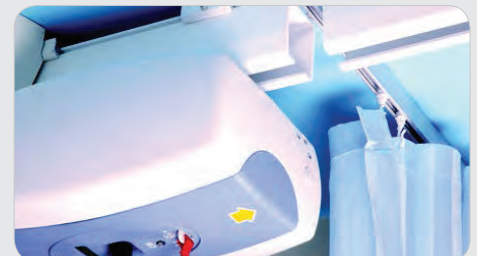
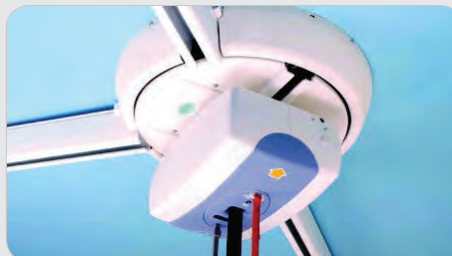
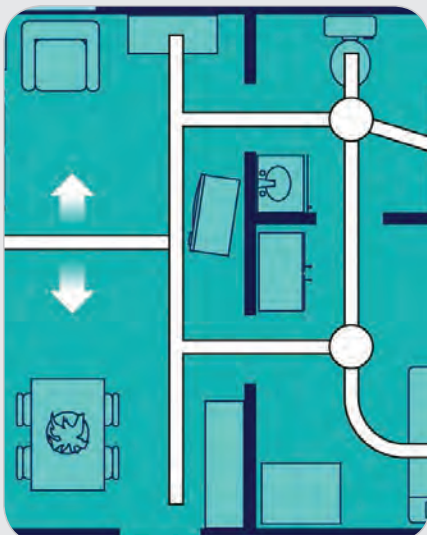
Installation Solutions & Tracking Systems



- A. Structural Attachment Point
- B. Threaded Rod
- C. Track Bracket
- D. Track
- E. Traverse Beam ('H' System)
- F. Charging Dock
- G. 'H' System
- H. Ceiling Hoist Unit
- I. Carry Bar
- J. Lifting Tape
- K. Sling
- L. Transition Gate
- M. Curved Track
- N. Modified Door Header



Easy to install whole room cover "H-systems"



Track & Accessories



Track and bends



Slim line wall support option



Slim line wall support option



Transition gate H system to straight track transfer



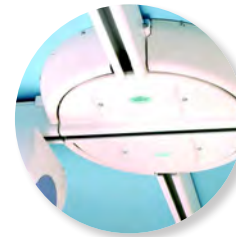
Option for crossing curtained cubicles



Heavy duty free standing gantry



Wall brackets



Electric and manually operated turntables

Prism Transactive Xtra Specifications

Specifications	
Max Safe Working Load	130kg, 160kg, 200kg, 270kg.
Approx number of lifts before recharge	With 85kg load approx 65
Charging time	8 hours max
Unit weight inc batteries	Manual: 9.7kgs Powered: 10.4kgs
Lifting speed	Loaded 0.15m/s; Unloaded 0.25m/s
Batteries	2 x 12V 5amp
Battery protection	Sleep Mode Voltage 24VDC
Transformer	IP 67 rated, 30V AC output, 230V AC input, 50/60mHz

Prism Transactive Xtra Ceiling Hoist Range

Code	Description	SWL
LIC350130	Transactive Xtra - Manual Traverse and Carry Bar	130kg
LIC350140	Transactive Xtra - Powered Traverse and Carry Bar	130kg
LIC350150	Transactive Xtra - Manual Traverse and Carry Bar	160kg
LIC350160	Transactive Xtra - Powered Traverse and Carry Bar	160kg
LIC350170	Transactive Xtra - Manual Traverse and Carry Bar	200kg
LIC350180	Transactive Xtra - Powered Traverse and Carry Bar	200kg
LIC350190	Transactive Xtra - XY Powered Traverse, Carry Bar and Return to Charge	200kg
LIC350200	Transactive Xtra - Manual Traverse and Carry Bar	270kg
LIC350210	Transactive Xtra - Powered Traverse and Carry Bar	270kg
LIC350220	Transactive Xtra - Powered Traverse, Carry Bar and Curtain Jumper Trolley	270kg
LIC350230	Transactive Xtra - Manual Traverse, Carry Bar and Curtain Jumper Trolley	270kg
LIC350190	Transactive Xtra - XY Powered Traverse, Carry Bar and Return to Charge	270kg

Quality & Compliance

- All systems are tested and installed in compliance with Australian Standard AS/NZS ISO 10535-2011: Hoists for the transfer of disabled persons
- Aidacare is an ISO9001 compliant company
- Aidacare uses an accredited network of trained installers, engineers and load testers.

